

Using the N3FJP Logger

V 1.0



2022-01-27

Rich Joerger
WB4EHG
2022/01/26



N3FJP

Amateur Radio Software®

- N3FJP develops and sells a suite of logging programs
- Each program is for a different contest/event
- The programs all have the same look and feel
 - Learn to use one and you can use them all
- This is an introduction to using this logger
- Our web site has another presentation on logging [here](#)



2022-01-27

Rich Joerger
WB4EHG
2022/01/27

Introduction

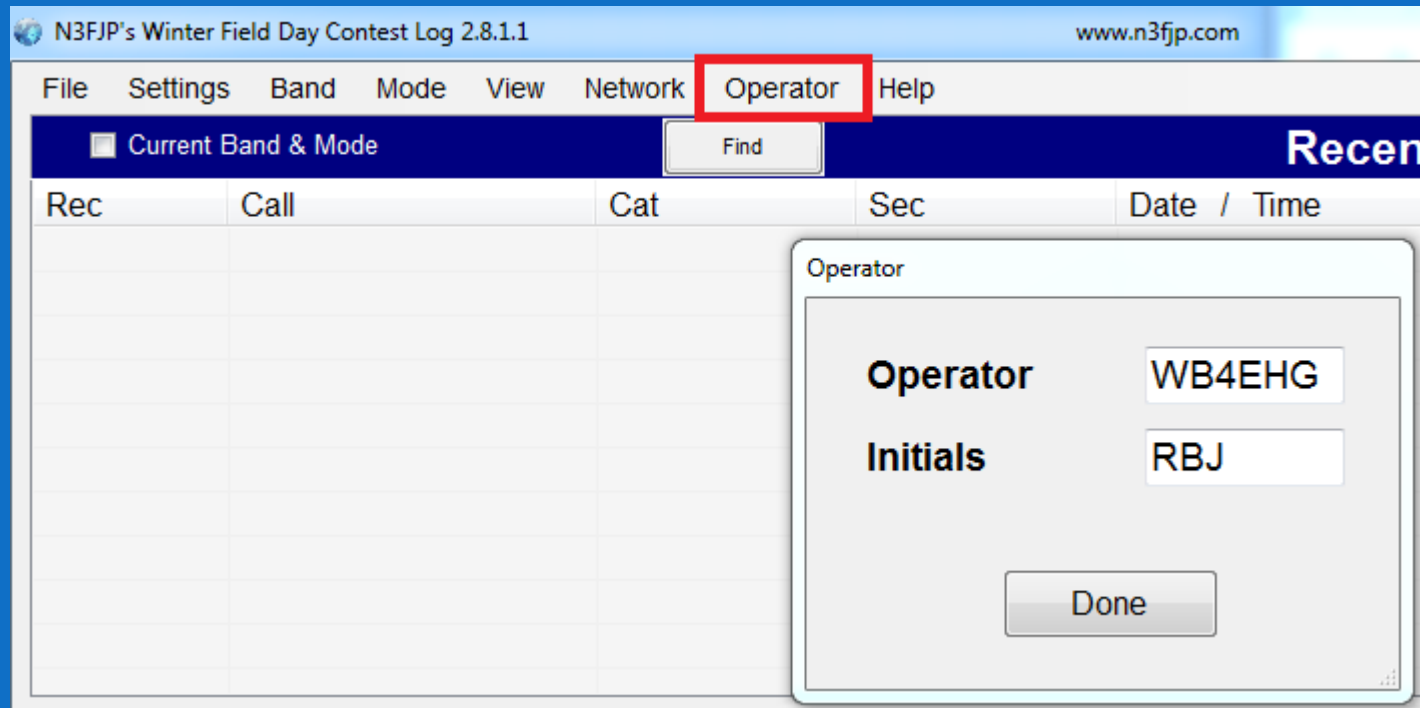
- This presentation shows you the parts of the Winter Field Day logger and how to use them
- This information refers to all of the N3FJP loggers
- It also has information about how networking on our laptops is set up for sharing the logger file across the laptops.

Logger's Main Form

- The logger main form is where all the action takes place.
- This is where enter the information from the other station and you log the contact
- The it has several sections.
 - We will examine each section
- The file has information on other logger sections
- The file has information on how the logger is networked across the club's laptops

Main Form: Set the Operator

- When you start operating we want you to set the operator fields to your callsign and initials
- You do this by using the Operator menu item



Main Form: Contact Table

N3FJP's Winter Field Day Contest Log 2.8.1.1 www.n3fjp.com

File Settings Band Mode View Network Operator Help

Current Band & Mode Find Recent Contacts Last 20 All

Rec	Call	Cat	Sec	Date / Time	Bnd	Mode	Country	Initials	Operator
11	N4QV	1H	AZ	01/26 18:11	30	PH	USA	RBJ	WB4E...
10	WB2RUU	1I	NNJ	01/26 18:11	30	PH	USA	RBJ	WB4E...
9	WB3ANE	1H	GA	01/26 18:00	30	PH	USA	RBJ	WB4E...
8	W4PPX	1H	SC	01/26 18:00	30	PH	USA	RBJ	WB4E...
7	WB4EHG	1H	RI	01/26 18:00	30	PH	USA	RBJ	WB4E...
6	KK4GUX	1H	DE	01/26 17:52	30	PH	USA	RBJ	WB4E...
5	VA3ISP	3O	ONE	01/26 17:50	30	PH	Canada	RBJ	WB4E...
4	K4OXM	2O	NFL	01/26 17:41	30	PH	USA	RBJ	WB4E...
3	KJ3Q	1H	NH	01/26 17:41	30	PH	USA	RBJ	WB4E...
2	WB4BAG	1O	SFL	01/26 17:39	30	PH	USA	RBJ	WB4E...
1	W4AW	1H	CT	01/26 17:31	30	PH	USA	RBJ	WB4E...

This is the table of contacts that have been made by ALL of our stations.

All of our stations write their contacts into a common database stored on Laptop #2, this is why you must not turn off Laptop #2. With in a minute of making a contact, all the laptops will be updated so don't be surprised when a contact you didn't make shows up



Main Form: Set Your Band & Mode

N3FJP's Winter Field Day Contest Log 2.8.1.1 www.n3fjp.com

File Settings Band Mode View Network Operator Help

Recent Contacts Last 20 All

Rec	Call	Cat	Sec	Date / Time	Bnd	Mode	Country	Initials	Operator
➤ Make sure that when you change the band or mode that the logger recognizes the change									

Score Statistics

Total CW Contacts	0
Total Phone Contacts	0
Total DIG Contacts	0
Total Multipliers	0
Total Score	0
QSOs / Hr (Last 20 min)	0
QSOs / Hr (Last 60 min)	0

Call

Cat

Section

DX

1

CT RI
EMA VT
ME WMA

3

4

DE MDC
EPA WPA

5

AR NTX
LA OK
MS STX
NM WTX

7

AK NV
AZ OR
EWA UT
ID WWA
MT WY

0

Canada

AB NT
BC ONE
GTA ONN
MAR ONS
MB PE
NL QC
SK

Except for the station running RTTY/PSK, the logger gets your band and mode from the radio. When you change bands or modes, verify that these values get set properly

If they are not set properly you can click the box and it will allow you to set the values

Bearing:

Miles:

Band: 30

Mode: PH

10.13600

NA4DC
30
SFL

5:28:32

17:28:32 UTC

Main Form: Your Sent Exchange

N3FJP's Winter Field Day Contest Log 2.8.1.1 www.n3fjp.com

File Settings Band Mode View Network Operator Help

Current Band & Mode Find

Recent Contacts

Last 20 All

Rec	Call	Cat	Sec	Date / Time	Bnd	Mode	Country	Initials	Operator

NA4DC is pronounced
November Alpha Four Delta
Charlie

3O is pronounced
Three Oscar

SFL is pronounced
Sierra Foxtrot Lima

Score Statistics

Total CW Contacts	0
Total Phone Contacts	0
Total DIG Contacts	0
Total Multipliers	0
Total Score	0
QSOs / Hr (Last 20 min)	0
QSOs / Hr (Last 60 min)	0

Call Cat Section

DX	3	5	7	0
DX	DE MDC	AR NTX	AK NV	CO MO
1	EPA WPA	LA OK	AZ OR	IA ND
CT RI	4	MS STX	EWA UT	KS NE
EMA VT	AL SC	NM WTX	ID WWA	MN SD
ME WMA	GA SFL	6	MT WY	Canada
NH	KY TN	EB SCV	MI WV	AB NT
2	NC VA	LAY SDC	OH	BC ONE
ENY NNY				GTA ONN
NLI SNJ				
NNJ WNY				

Possible Duplicates Any Portion

North New Jersey Total = 0

Bearing: Miles:

Band: 30 Mode: PH 10.13600

NA4DC 3O SFL

5:28:32
17:28:32 UTC

This is what you send to the other station

Main Form: Our Goal

Make all the red sections turn blue

Goal: work all US and Canadian sections & stations

DX	3	5	7	0
DX	DE MDC	AR NTX	AK NV	CO MO
1	EPA WPA	LA OK	AZ OR	IA ND
CT RI	4	MS STX	EWA UT	KS NE
EMA VT		NM WTX	ID WWA	MN SD
ME WMA	AL SC		MT WY	Canada
NH	GA SFL	6	8	AB NT
2	KY TN	EB SCV	MI WV	BC ONE
ENY NNY	NC VA	LAX SDG	OH	GTA ONN
NLI SNJ	NFL VI	ORG SF	9	MAR ONS
NNJ WNY	PR WCF	PAC SJV	IL WI	MB PE
		SB SV	IN	NL QC
				SK

Each new section is a multiplier.
Our score is calculated multiplying our number of contacts times the number of multipliers.

New sections are important!



Main Form: Working a New Section

The contact entry section shows you how the logger indicates that you have worked a new section

Call KK4GUX	Cat 1H	Sect New! DE
-----------------------	------------------	--

New is shown here because it is a multiplier

When you work a new section the section's color changes in the table

DX	3	5	7
DX	DE MDC	AR NTX	AK NV
1	EPA WPA	LA OK	AZ OR
CT	4	MS STX	EWA UT
EMA VT	AL SC	NM WTX	ID WWA
ME WMA	GA SFL	6	MT WY
NH	KY TN	EB SCV	8
2	NC VA	LAX SDG	MI WV
ENY NNY	NFL VI	ORG SF	OH
NLI SNJ	PR WCF	PAC SJV	9
NNJ WNY		SB SV	IL WI
			IN



Making a Contact

- There are two types of contest operating:
 - Running a frequency
 - Find a clear frequency and start calling “CQ Test NA4DC”
 - This is the fastest way to make contacts. They chase you.
 - Search and Pounce (S&P)
 - Start at one end of the band, spin the VFO and work every station you can
 - You call the other station: “His call, this is, NA4DC”
 - This is a slow way to make contacts

Making a Contact

- You can use the method you are comfortable with
 - In both cases you **MUST** enter his contact information and hit the return key to log the contact
 - Note: you use the Tab key to move from one entry box to the next
 - Before working a station you must enter his call sign to ensure you have not worked him already
 - If you are operating S&P you should enter all his information before working him but don't hit enter until you do work him



Making a Contact

➤ You must enter 3 things from the other station

■ His **Call** Sign

Call KK4GUX	Cat 1H	Sect <small>New!</small> DE
-----------------------	------------------	---------------------------------------

This is the logger's contact entry section

■ His **Cat**egory/Class

■ His ARRL/RAC **Section**

Category/Class are a number followed by a letter.
Number = how many transmitters they have on the air
Letter is one of: "I" (India), "O" (Oscar), "H" (Hotel)

➤ The program will not let you enter a bad category or section, it will warn you & refuse to accept the entry

➤ **But you can enter a wrong category or section**

Main Form: Entering Bad Info

Call WB4BAG	Cat 1P	Section
-----------------------	------------------	--------------------

Please type a valid category. The first character is the number of transmitters. The second character is the site: Indoor, Outdoor, Home.

Call VA3ISP	Cat 30	Section ON
-----------------------	------------------	----------------------

ON is an invalid section abbreviation.

- The correct sections are in this table

DX	3	5	7	0
DX	DE MDC EPA WPA	AR NTX LA OK MS STX NM WTX	AK NV AZ OR EWA UT ID WWA MT WY	CO MO IA ND KS NE MN SD
1	4	6	8	Canada
CT RI EMA VT ME WMA NH	AL SC GA SFL KY TN NC VA NFL VI PR WCF	EB SCV LAX SDG ORG SF PAC SJV SB SV	MI WV OH	AB NT BC ONE GTA ONN MAR ONS MB PE NL QC SK
2			9	
ENY NNY NLI SNJ NNJ WNY			IL WI IN	



Main Form: Entering His Info

- The logger will give you some help getting his information.
 - If we have worked him before on another band or mode, the logger will fill in his category and section
 - If he is a contester his call might be in a datafile called “Super Check Partial” which the logger will search for you

Super Check Partial [link](#)

- The logger starts searching the database when you start entering a call sign.
- It displays call signs from the database that match the part of the call already entered.
- As you enter more characters the match gets better and better
- Call search results are shown on the main form as you enter the call sign

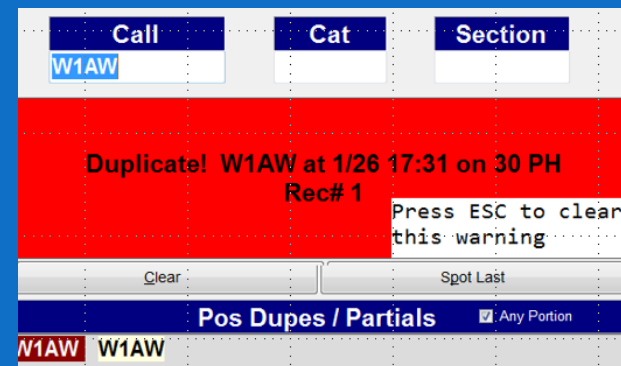
Main Form: Super Check Partial

Call WB	Cat	Section	Call WB4	Cat	Section
1			2		
Clear Spot Last			Clear Spot Last		
Pos Dupes / Partials <input checked="" type="checkbox"/> Any Portion			Pos Dupes / Partials <input checked="" type="checkbox"/> Any Portion		
WB4BAG 4U1WB 9A2WB AA3WB AD0WB AD5WB BH2SWB DF5WBA DF9WB DK1WB DL1SWB DL2HWP DM2WB DO3WBH DU1WBX EA2EWB F4WBL FS4WBS G0BWB G3WBB I0WBX IK2WBK IK3SWB IT9RWB JA1KWB JA1WBX JA3UWB JA6BWB JA7OWB JE7WBI JI2IWB K0TWB K1WB K2WB K4WB K4WBG K7AWB K9WBS KB5WB KC5HWP			WB4BAG WB4AAA WB4ABY WB4AEG WB4C WB4CUZ WB4CW WB4DC WB4DKQ WB4DKU WB4DNL WB4E WB4EEH WB4EHG WB4EWS WB4FDT WB4FSF WB4FSU WB4FWQ WB4GHZ WB4HMA WB4HRL WB4IIH WB4IT WB4JFS WB4JHS WB4KDI WB4KFO WB4KLI WB4KTF WB4KUU WB4MDX WB4MJF WB4MM WB4MNK WB4MSG		
Call WB4E	Cat	Section	Call WB4EH	Cat	Section
3			4		
Clear Spot Last			Clear Spot Last		
Super Check Partials <input checked="" type="checkbox"/> Any Portion			Super Check Partials <input checked="" type="checkbox"/> Any Portion		
WB4E WB4EEH WB4EHG WB4EWS			WB4EHG Call is complete		



Main Form: Dups

- Serious contesters get pretty annoyed when you try to work them a 2nd time on the same band with the same mode. You have wasted their time.
- And you waste your time
- That's why we network the computers
- Before working a station you must enter his call
- The logger will alert you if there is a possible match on the same band and mode already



Main Form: Dups

- The possible dup warning looks like this

The screenshot shows a software interface with three input fields at the top: 'Call' containing 'W1AW', 'Cat', and 'Section'. Below these is a large cyan box with the text 'Possible Duplicate!'. At the bottom, there is a dark blue bar with the text 'Pos Dupes / Partials' and a checked checkbox for 'Any Portion'. Below this bar, two 'W1AW' call signs are displayed in red and white boxes. At the very bottom, there are two buttons: 'Clear' and 'Spot Last'.

- The dup warning looks like this which is shown if you tab from the Call box

The screenshot shows the same software interface as the previous one, but with a red box overlaid on the cyan warning box. The red box contains the text 'Duplicate! W1AW at 1/26 17:31 on 30 PH Rec# 1' and 'Press ESC to clear this warning'. The rest of the interface, including the 'Call' field with 'W1AW', the 'Pos Dupes / Partials' bar, and the 'W1AW' call signs, remains visible.

- Press the ESC key and move on to another contact

Main Form: Editing a Log Entry

- Mistakes happen, we all make them.
- The logger allows you to edit a logged contact

I entered the wrong section

Rec	Call	Cat	Sec	Date / Time	Bnd	Mode
9	WB3ANE	1H	GA	01/26 18:00	30	PH

Click the entry in the table and 2 boxes appear

9	WB3ANE	1H	GA	01/26 18:00		
8	W4PPX	1H	SC	01/26 18:00		
7	WB4EHG	1H	RI	01/26 18:00		
6	KK4GUX	1H	DF	01/26 17:52		
5	VA3ISP	30				
4	K4OXM	20				

Edit the necessary boxes and click the Done button or cancel to quit

Edit Contact

Call	Category	Section	Date	Time On	Band	Mode (tst)	Initials
WB3ANE	1H	GA	2022/01/26	18:00:50	30	PH	RBJ

More Cancel Done

Main Form: Our Score

N3FJP's Winter Field Day Contest Log 2.8.1.1 www.n3fjp.com

File Settings Band Mode View Network Operator Help

This is our cumulative score.
The info will change after every contact.
The logger calculates this for us.
The operator cannot change these values,
except for making contacts.

Score Statistics

Total CW Contacts	0
Total Phone Contacts	11
Total DIG Contacts	0
Total Multipliers	1
Total Score	11
QSOs / Hr (Last 20 min)	0
QSOs / Hr (Last 60 min)	2

Call <input type="text"/>	Cat <input type="text"/>	Sectio <input type="text"/>	DX 1 CT RI EMA VT ME WMA	3 DE MDC EPA WPA 4 AL SC GA SFL	5 AR NTX LA OK MS STX NM WTX	7 AK NV AZ OR EWA UT ID WWA MT WY	0 CO MO IA ND KS NE MN SD Canada
-------------------------------------	------------------------------------	---------------------------------------	--	--	---	---	---

Main Form: Spotting

- Spotting refers to when a station makes a contact and then enters the contact information (call, band/frequency, mode) into an on-line database.
- Other hams watch the database via a web browser and will try to work that station.
- The logger can display spots and filter them to the band and mode you are operating.
- Enabling spotting requires very careful configuration otherwise an operator can click on a spot that takes them to a band they are not set up to operate, possibly harming the transmitter or the band pass filter.
- For that reason, I am leaving spotting turned off in N3FJP. The advanced operator can turn it on.

Spotting

- You can use spotting web sites on-line
- Here are a few I use
 - [Dxwatch.com](https://dxwatch.com)
 - [Hamspots.net](https://hamspots.net)
 - [Dxsummit.fi/#/](https://dxsummit.fi/#/)
- You can see where your signal is being heard [here](#)
- You can check on propagation [here](#)

UTC	Age	DX	Freq	Sig	Mode	Grid	St	Country	Spotter
Jan-26	23:20	2m	4J5MFT	7078.71	-05	JT65A		Azerbaijan	KM3T
Jan-26	23:20	2m	KP4RK	7186.00		SSB		Puerto Rico	VE3XIN
Jan-26	23:19	3m	G5TST	7007.30		CW		England	G1TLH
Jan-26	23:17	5m	ZF2OO	7156.00		SSB		Cayman Islands	YO3IPR
Jan-26	23:17	5m	V31XX	7120.00		SSB		Belize	IZ8DPJ
Jan-26	23:17	5m	ZF200	7156.00		SSB		Cayman Islands	YO3IPR
Jan-26	23:16	6m	F6BWJ	7056.80	+23	RTTY		France	WZ7I
Jan-26	23:16	6m	YV8TY	7135.00		SSB		Venezuela	VE3XIN
Jan-26	23:16	6m	EA5C	7032.00				Spain	NS4V
Jan-26	23:14	8m	WP4KP	7180.00		SSB		Puerto Rico	EC1DJ
Jan-26	23:14	8m	RK6BU	7178.00		SSB		European Russia	PW8BR
Jan-26	23:13	9m	ZF2OO	7156.00		SSB		Cayman Islands	N4RWG



View Form: Statistics

- The logger creates a list of statistics about our operating
 - It is under the View menu
- The states, provinces & countries contacted & how many times
- The number of contacts for each mode
- How much time was spent operating
- Etc.

```
Statistics (Ctrl T)
Total Contacts = 11
Total Points = 11

Operating Period: 2022/01/26 17:31 - 2022/01/26 18:11

Total op time (breaks > 30 min deducted): 0:40:27
Total op time (breaks > 60 min deducted): 0:40:27

Avg Qs/Hr (breaks > 30 min deducted): 16.3

Total Contacts by Band and Mode:

Band      CW   Phone   Dig   Total   %
-----  --   -----  ---  -----  ---
30         0     11     0     11     100
-----  --   -----  ---  -----  ---
Total     0     11     0     11     100

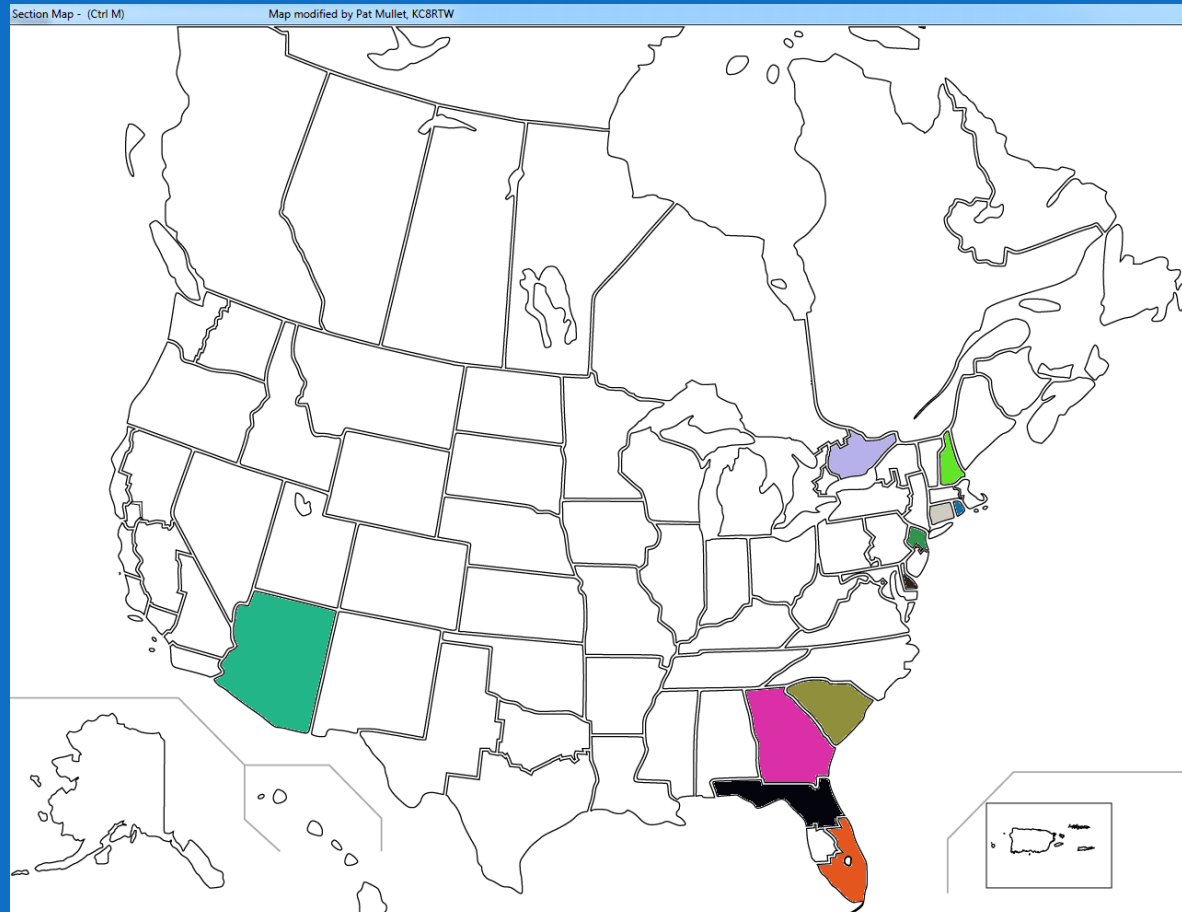
Total Contacts by Section:

Section   Total   %
-----  -----  ---
AZ         1       9
CT         1       9
DE         1       9
GA         1       9
NFL        1       9

Copy to Clipboard  Sort By:  Count  Alphabetically  Done
```

View Form: Map

- The logger creates a map of the US and Canada with the worked sections colored
 - It is under the View menu



Network Form: Network Status Display

Network Status Display 1.2 (Ctrl N)

Phone:	160	80	60	40	30	20	17	15	12	10
CW:				DCARC-LAPTO				DCARC-LAPTO		DCARC-LAPTO
Digital:						DCARC-LAPTO				
Phone:	6	2	1.25	70 cm	33 cm	23 cm	13 cm	9 cm	6 cm	3 cm
CW:										
Digital:										

This Station's Name:

DCARC-LAPTOP-2

Server Name or IP:

DCARC-LAPTOP-2

Set Msg Server to Log

File Host

Port:

1000

Type message to send and press enter:

Message To (blank to broadcast):

ted in networking this program for a multi op contest, DXPedition or you just want to access your log from multiple PCs simultaneously at your home or club station, please read on! Better yet, click the Help button to your right below, which will take you to a web page that not only includes a more recent version of this text, but lots of graphics as well!

There's lots of explanation below, including how to network your PCs, enable the band status and messaging. If you are setting up for Field Day it is a MUST READ, but in short, to network multiple PCs, simply put your log file in a location that is accessible to all the PCs you wish to network by clicking File > Save As. Then, from the other PCs, click File > Open, navigate to the file and select it. Any contacts you enter should appear on all PCs in a minute or less (depending on the refresh rate you set). That's all there is to it!

For the rest of the story, some of the emphasis is on Field Day as that environment is the ultimate test of any network, but the information below applies to networking all of my software.

There are now two methods for networking my software - File Share and TCP. File Share has been used very successfully since I first introduced the networking versions of my software in the late 1990s with the vast majority of users. I added TCP in July, 2013 as a second networking option that should help the few groups who encountered file share problems resulting from slow network connections and / or intermittent network connectivity.

Following Field Day 2013, I received lots of great reports from the vast majority of groups who networked with File Share using my new C# rewrite (Field Day

Status: Connected to: DCARC-LAPTOP-2

DCARC-LAPTOP-2
DCARC-LAPTOP-1
DCARC-LAPTOP-3
DCARC-LAPTOP-4

Server and clients connected

Network Method:

File Share

TCP

Enable Status / Chat Functions

Sync Clocks

Help

Done

Network Form: Logger Drive Share

- Our laptop implementation has the shared logger file on Laptop 2.
- The other laptops have to be configured to access this share

The folder with the database file is shared via the network with the other laptops.

Those laptops mount the share as drive N:\

The database file is:

```
N:\Documents\000 N3FJP Log File Share Master\LogData.mdb
```

To access this file, start the N3FJP WFD Logger;

- Click File Menu

- Click Open in the file menu

- Navigate to the folder shown above and click on LogData.mdb

More details are in WB4EHG's file:

**W:\My-Ham Radio\DCARC\280 - N3FJP Software\2022-01-24
Configure N3FJP for Networking.docx**



Summary

- Set your call sign and initials when you first start
- Make sure the logger is indicating the correct band and mode
- Enter the stations call sign before you call him to check for dups
- Work as many stations as you can
- Prioritize unworked sections but don't let a good contact go
- **DO NOT TURN OFF THE COMPUTER**
- **Have FUN!**